

# OPERATOR STATION FIRMWARE UPDATE MANUAL



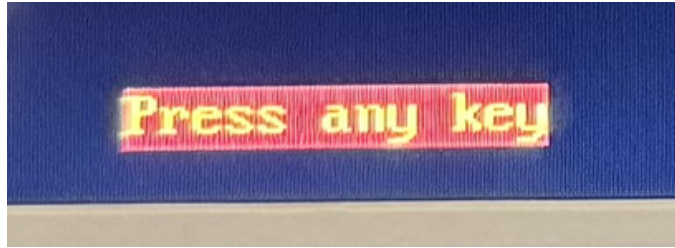
# TABLE OF CONTENTS

<b>I</b>	<b>Updating the Firmware</b>	<b>3</b>
<b>II</b>	<b>Troubleshooting</b>	<b>5</b>
<b>III</b>	<b>Contact Information</b>	<b>6</b>



# UPDATING THE FIRMWARE

- Before performing these update steps, be sure to document the settings for the sub-menus in “F4 Setups”.
- Extract (unzip) the folder.
- If your start-up screen has the “press any key” message, then you will need to use the “SF70” update file.



- Copy the “SF70” file onto a freshly formatted USB key and ensure that the update is the only file on the USB.
- The operator station needs to be turned off in order to begin the update process.
- Plug the USB into the port and, while holding down the update button, power on the operator station.



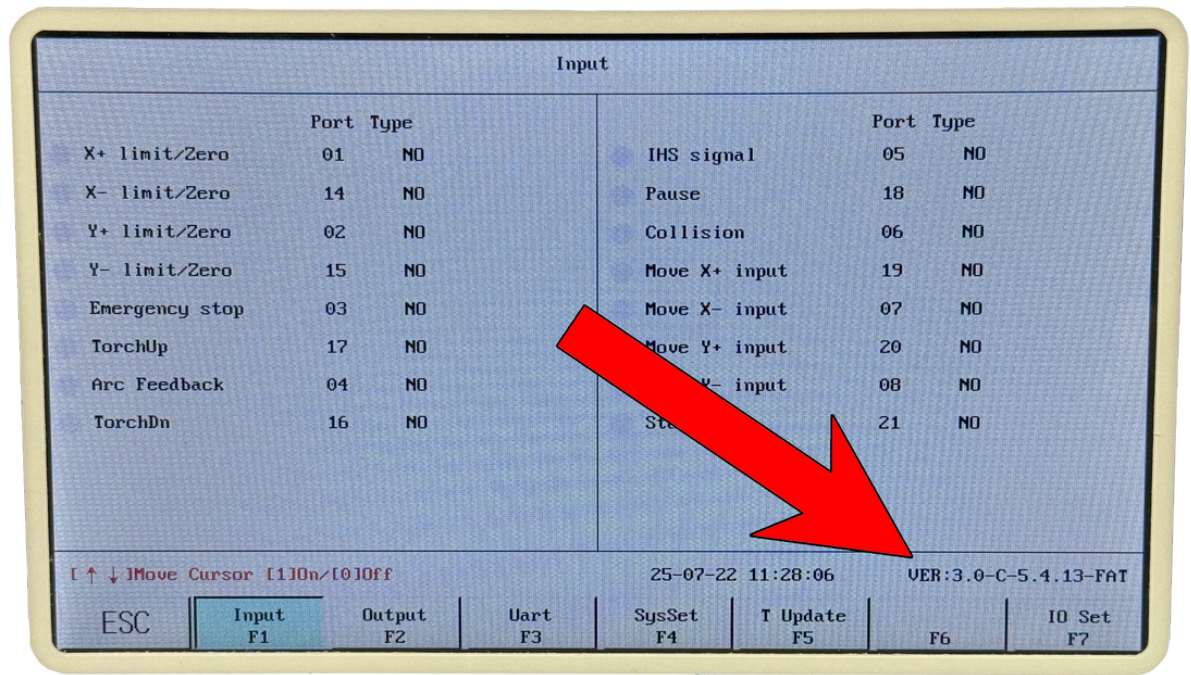


# UPDATING THE FIRMWARE

- The update will begin automatically.



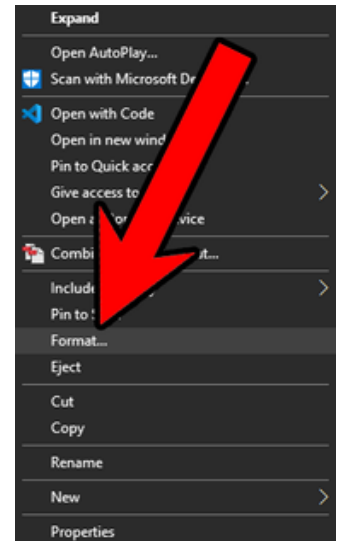
- Once finished, the screen will prompt you to restart the unit.
- After rebooting the operator station, you can verify that the update was successful by navigating to the “Diagnose” menu (F5). In the bottom right-hand corner of the screen, you will see the software version.



# TROUBLESHOOTING

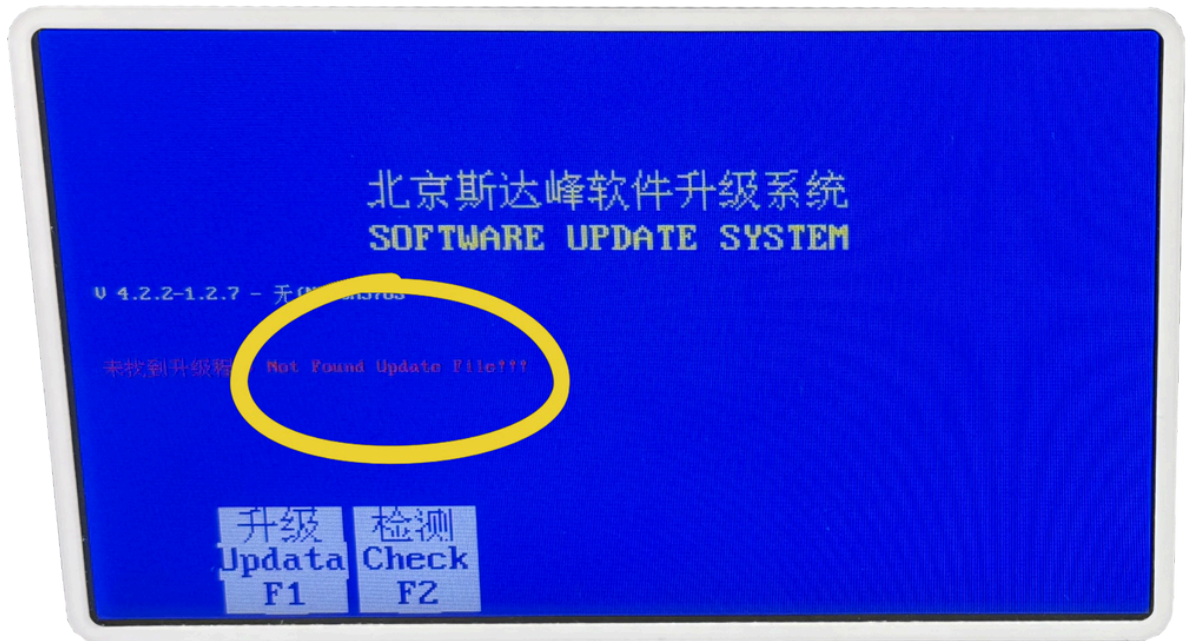
## Update File Not Found

- When receiving the “update file not found” error, it can mean that the USB key needs to be formatted or the USB key storage is larger than 16Gb.
- Plug the USB into your computer and right-click the location of the USB.
- Select the option labelled “format” from the menu that pops up.
- Once formatted, reload the update file onto the USB.
- Repeat the steps on page 3 to perform the update.

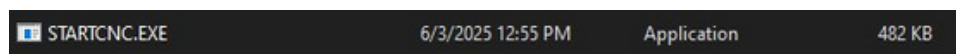


## Update File Not Found

- If your update screen is blue, you will need to rename the update file.



- Locate the “SF70” file and rename it to “STARTCNC.EXE”



- Load the newly named file onto your USB and take it to the operator station.
- Perform the same update process on page 3 with the new file name.

## Operator Station Firmware Update

# TROUBLESHOOTING

## Table non-functional after update

- If your table will not cut after being updated, it could be that your settings were overwritten during the process.
- Consult the setting that you noted before applying the update and ensure they match.
- If you did not document the settings before the update, you can find the default factory settings in the folder labelled “**SysSet Parameters**”.
- In the “Setups” menu on the operator station, select the second option on the main screen to import the default parameters.



# CONTACT INFORMATION



1-905-981-4256



[sales@halo-innovations.ca](mailto:sales@halo-innovations.ca)



[halo-innovations.ca](http://halo-innovations.ca)

